



MINISTRY of HEALTH  
REPUBLIC OF BOTSWANA

Republic of Botswana

*Botswana Integrated Disease Surveillance & Response*

# *Monthly Report of Notifiable Diseases -*

## *FEEDBACK*

### *DECEMBER 2014*

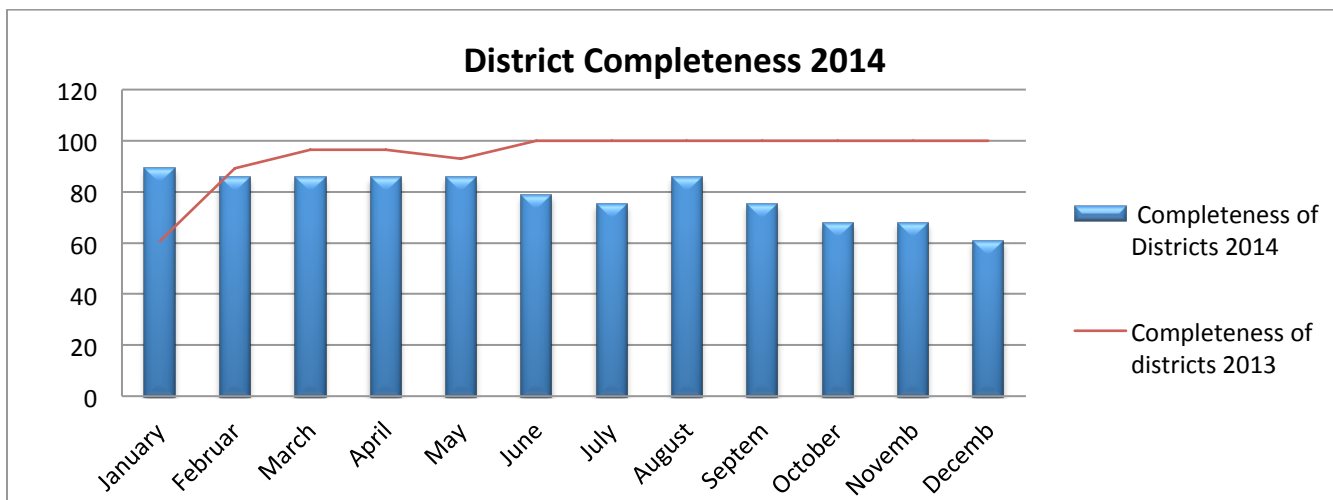
This is a monthly report of Notifiable Diseases, Deaths and Public Health events in Botswana. Reports are received from 28 health districts on a monthly basis. **Deadline for submission of reports from the districts to the central level is the 7<sup>th</sup> day of each following month at 1200 noon.** The contacts at National Level are the following members of the IDSR unit; [idsrbotswana@gmail.com](mailto:idsrbotswana@gmail.com)

*All districts which have not sent any of their monthly reports from January to date 2014 to the IDSR unit are urged to do so as soon as possible.*

Public Health Specialist/ MOs/ Matrons should make sure that they have reviewed and endorsed the monthly reports before sending them to the central level. This will assist in utilization of this data for action at the source and help reduce errors and misreporting.

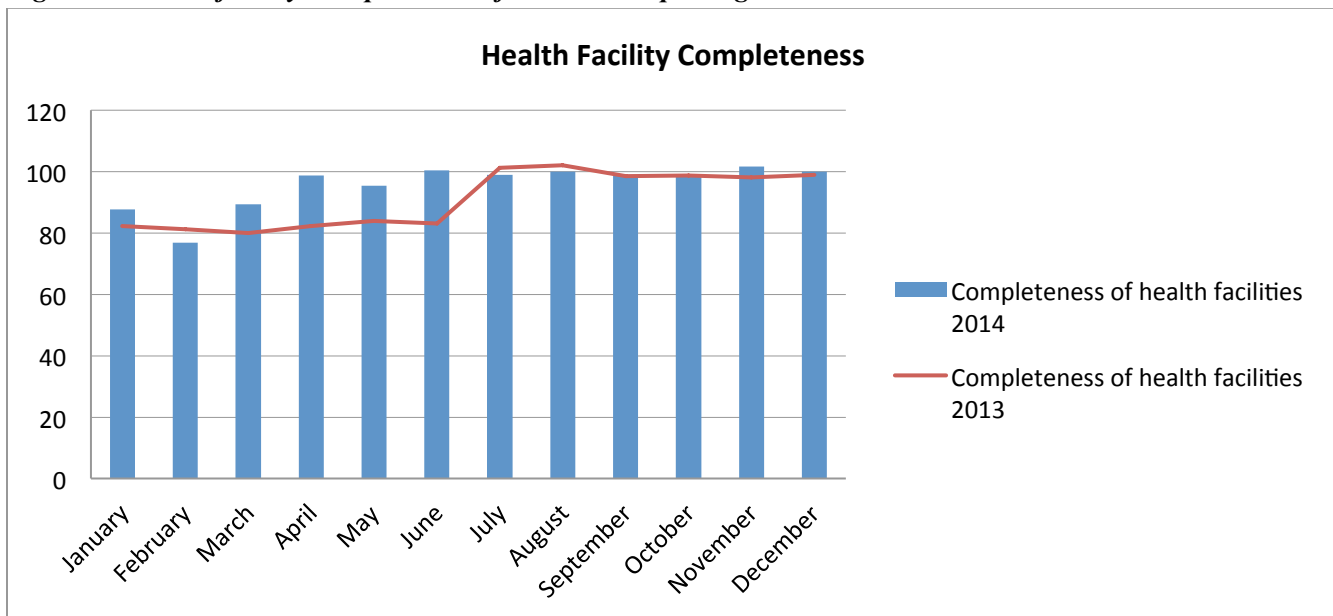
#### 1. Timeliness and Completeness of MH2072 Reporting

*Figure 1: Completeness of MH2072 Reporting*



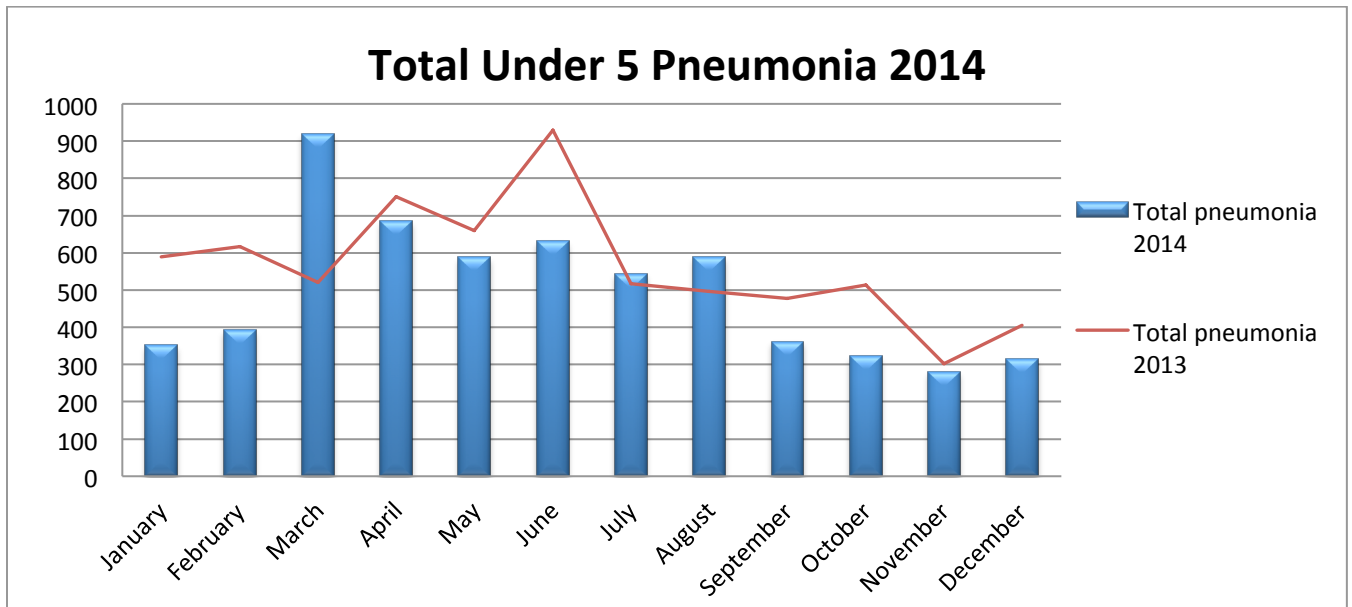
The graph above shows a level of district completeness that is below the target level of 80%. Out of the 28 districts 17 managed to report on time and 11 districts failed to report.

**Figure 2: Health facility Completeness of MH2072 Reporting**



**2. Pneumonia**

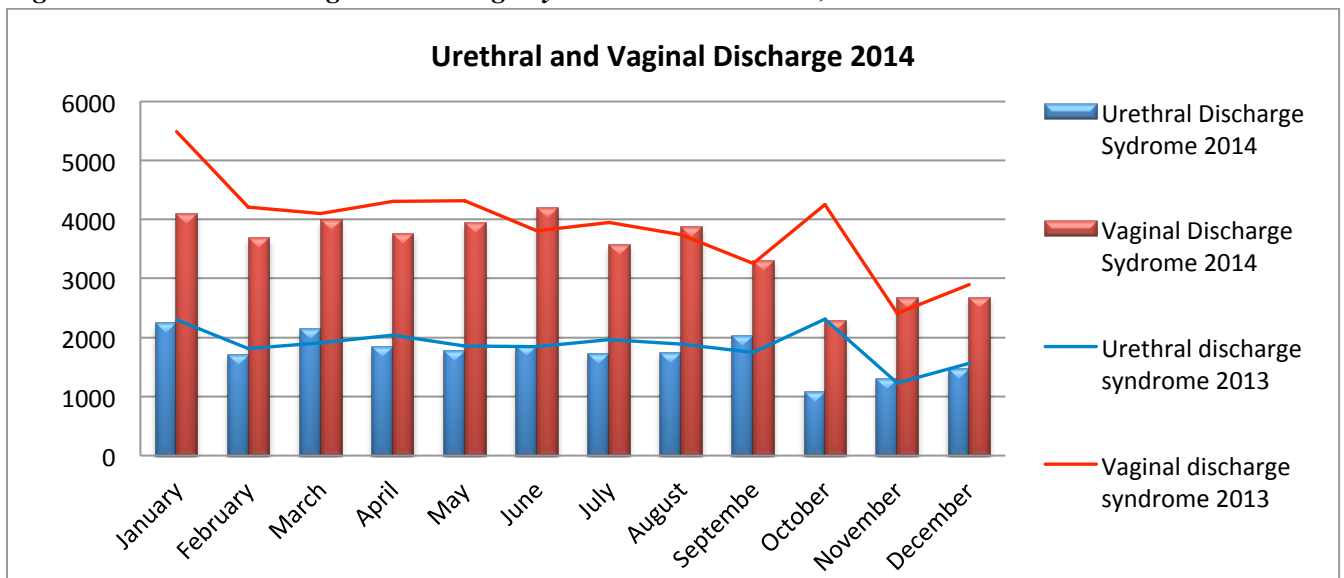
**Figure 3: Total Pneumonia Cases in Under-5s in Botswana, 2014**



There were 245 total under 5 pneumonia reported cases in November whereas 315 cases were reported for December. Mahalapye recorded the highest at 53 cases, Ngami stood at 38 cases followed by Kgatleng at 37 cases.

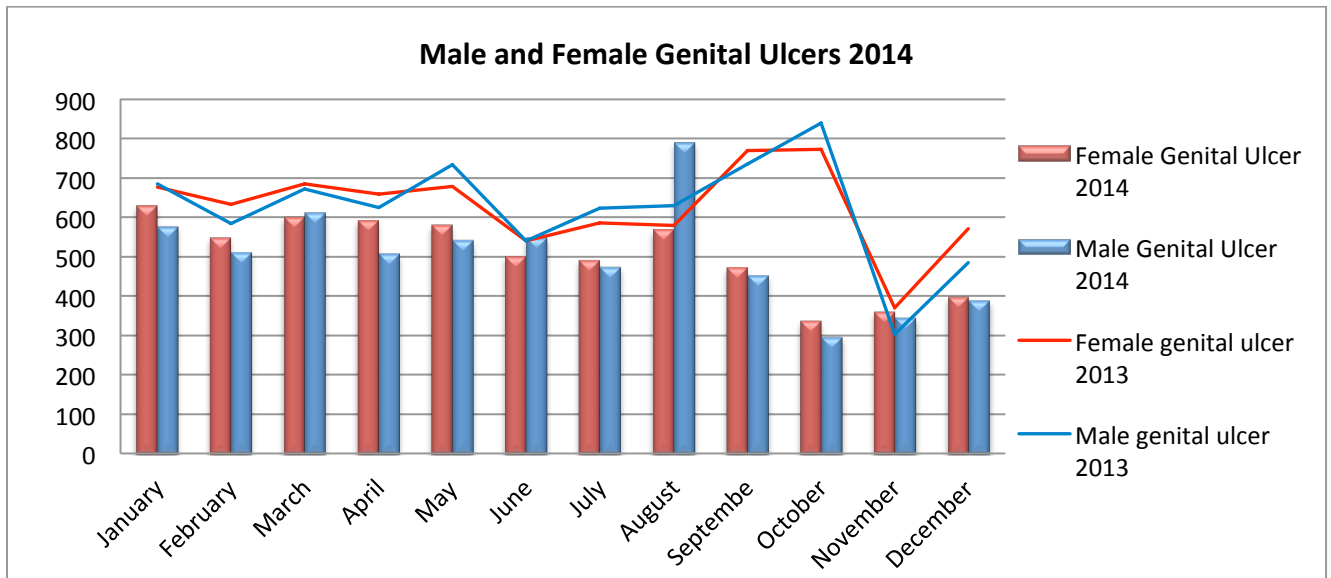
#### Urethral and Vaginal Discharge Syndromes in Botswana

*Figure 5: Urethral and Vaginal Discharge Syndromes in Botswana, 2014*



#### Male and Female Genital Ulcer Syndromes in Botswana

*Figure 6: Male and Female Genital Ulcer Syndromes in Botswana*



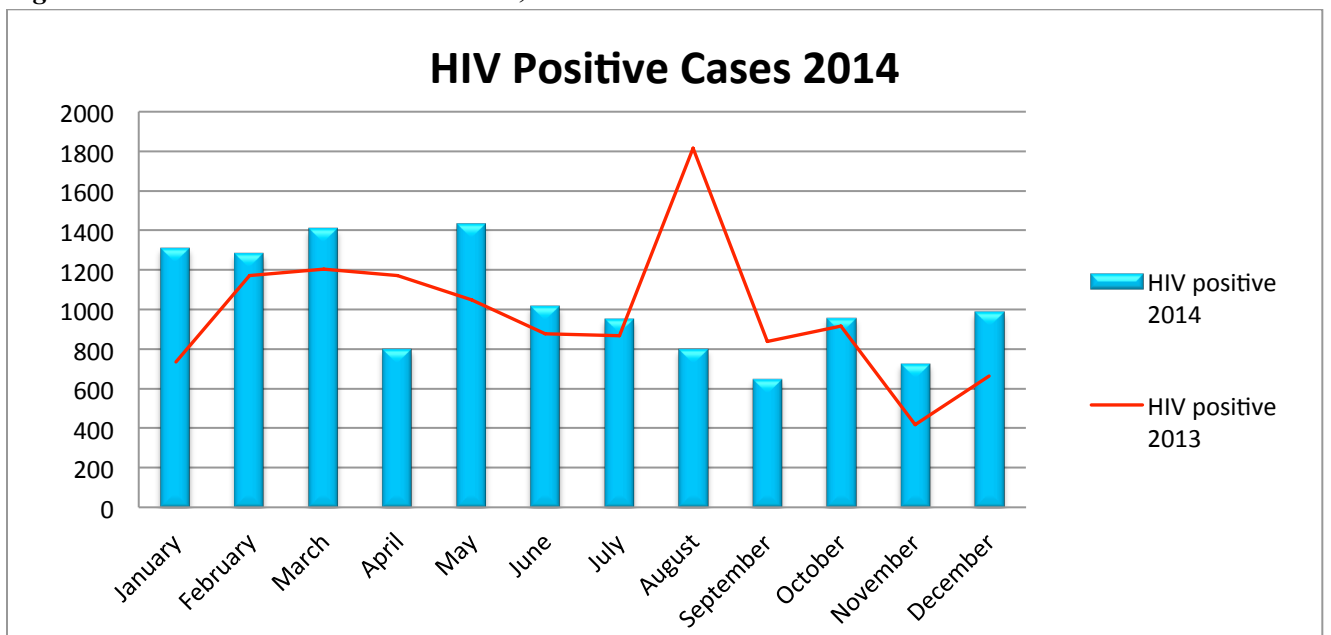
A total of 1144 cases of urethral discharge syndrome have been recorded in November whereas 1461 cases were recorded in December.

There were 2334 cases of vaginal discharge syndrome reported in November while 2667 cases of vaginal discharge syndrome were reported in December.

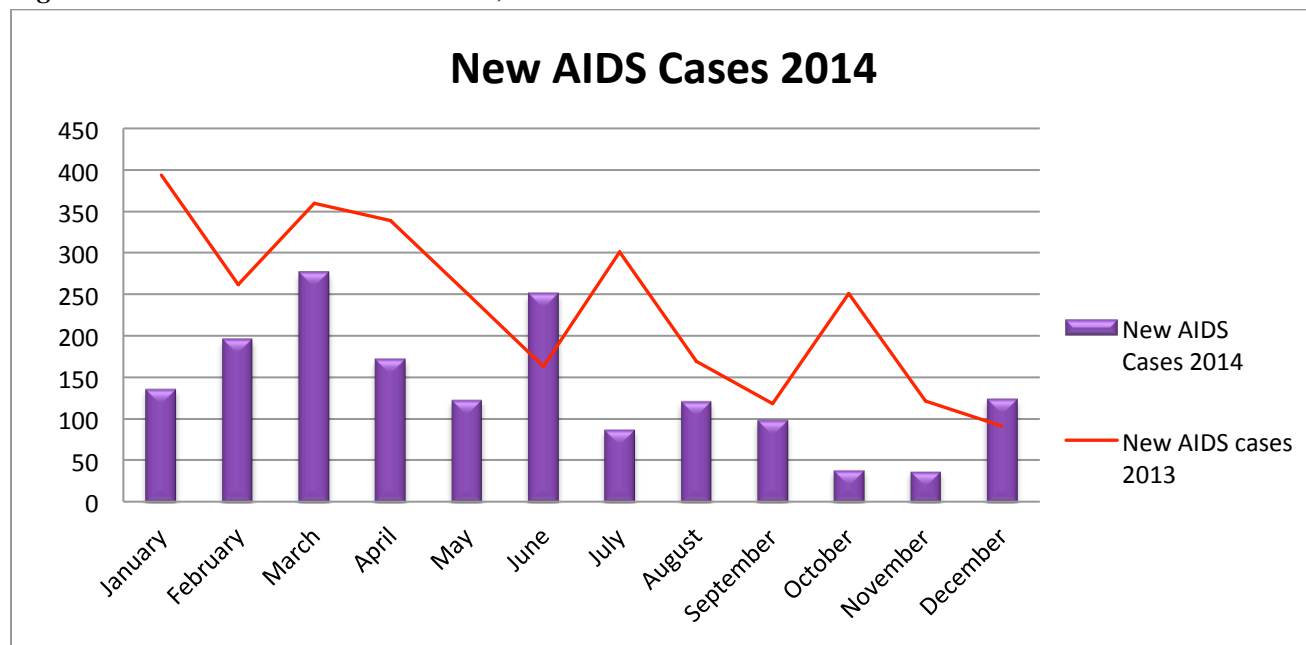
November recorded 321 cases of Female genital ulcer compared to 398 cases in December. Furthermore 303 cases of Male genital ulcer were captured in November whereas December reported 391 cases.

### **HIV Positive and New AIDS Cases in Botswana, 2014**

*Figure 7: HIV Positive Cases in Botswana, 2014*



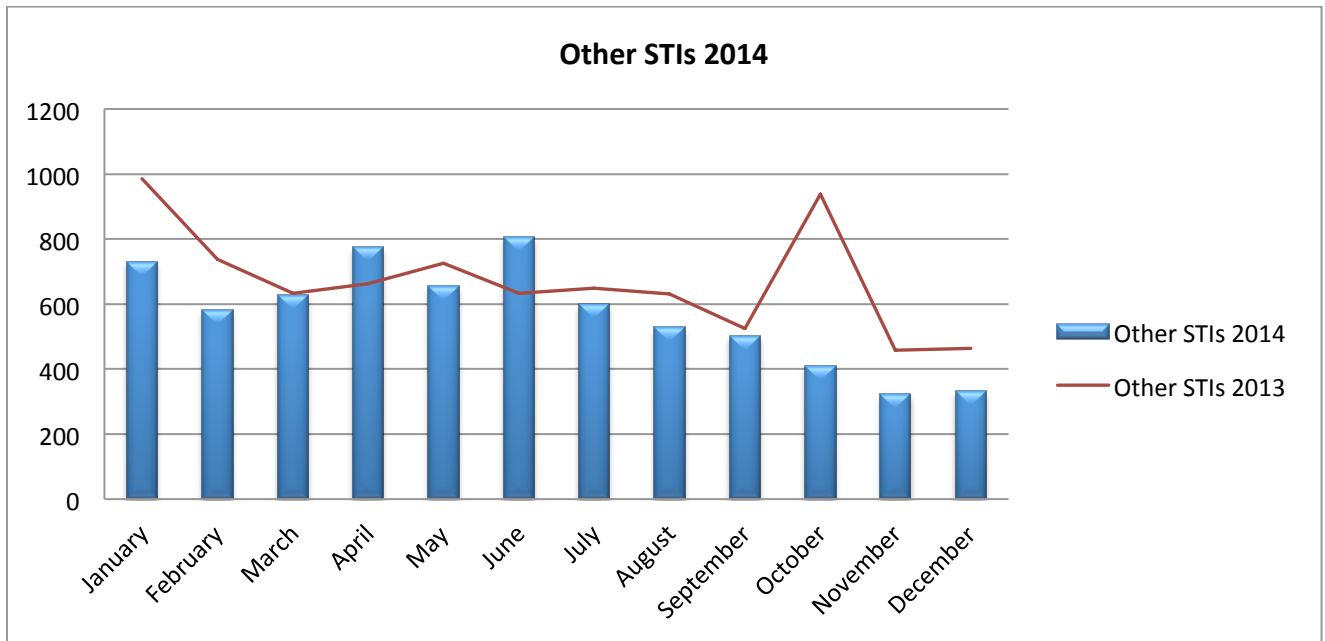
**Figure 8: New AIDS Cases in Botswana, 2014**



November recorded 505 HIV Positive Cases and 6 deaths compared to 987 cases in December and 5 deaths. Furthermore 31 New AIDS Cases were captured in November and 124 cases were recorded for December.

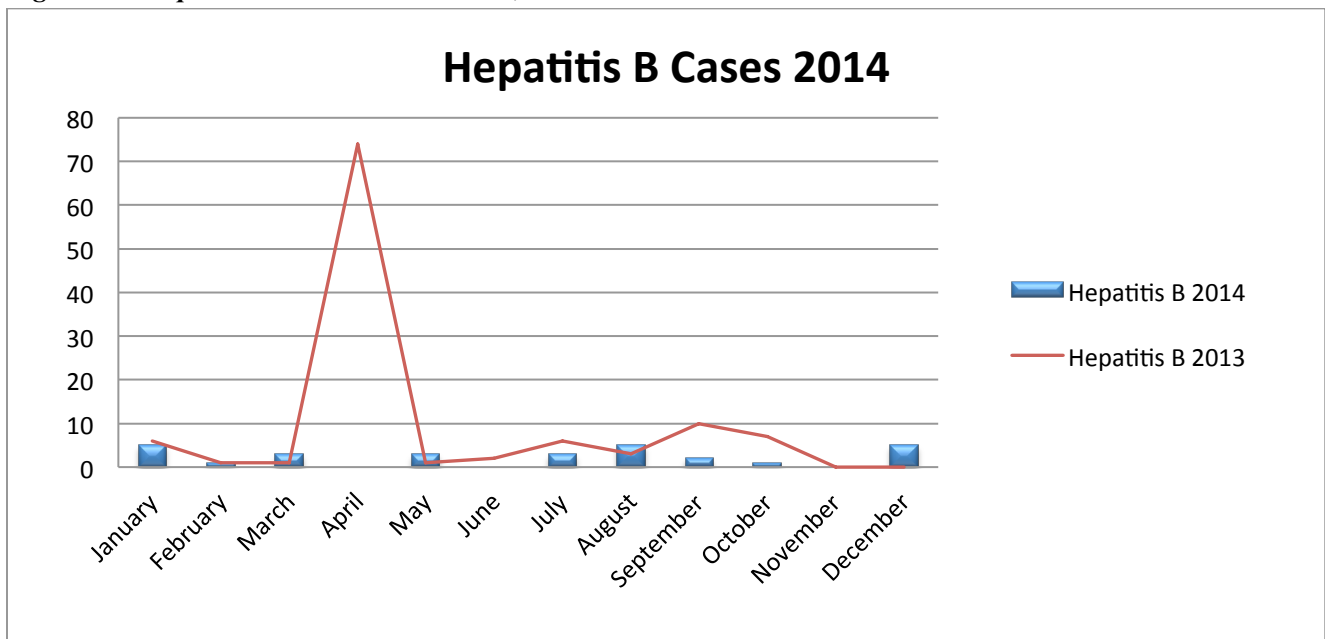
**5. Other STI'S Cases in Botswana, 2014**

**Figure 9: Other STI'S Cases in Botswana, 2014**



A total of 235 cases of other STIs were recorded in November compared to 330 cases reported in December. The highest cases of other STI's in December were recorded in Ngami at 49 cases.

**Figure 10: Hepatitis B Cases in Botswana, 2014**



November reported nil cases of Hepatitis B whereas December reported 5 cases of Hepatitis B.